

IRAQI SEISMIC NETWORK ISN

SEISMIC REPORT

Al-Refaee Earthquakes of 5.8.2004 and 28.8.2004

Since, 1990 till now, the south and southeastern part of Iraq witnessed a number of small earthquake some of them were felt by inhabitants.

The felt earthquake had been recorded by the ISN during the August 2004 . The first event was in 5/8/2004 while the second occurred on 28/8/2004.

Both earthquakes have hit AL-refaee City /Amara Province and surrounding area . The most affected areas in Amara Province are the cities of AL-hai, AL-fajer, Qala Sugar and AL-refaee

Table (1)

date	Mag.	location	Depth
5/8/2004	5.1	AL-refaee	10 KM
28/8/2004	4.7	AL-refaee	10 KM

In order to make a full damage assessment of the effect of the earthquakes. A group ,from The ISN seismology department visited the affected area.

The results of investigation around AL-refaee showed that, minor to heavy destruction have occurred to the low income houses and public

work, as shown in the photos. Plates 1 to 8 displays the sustained damage in the region.

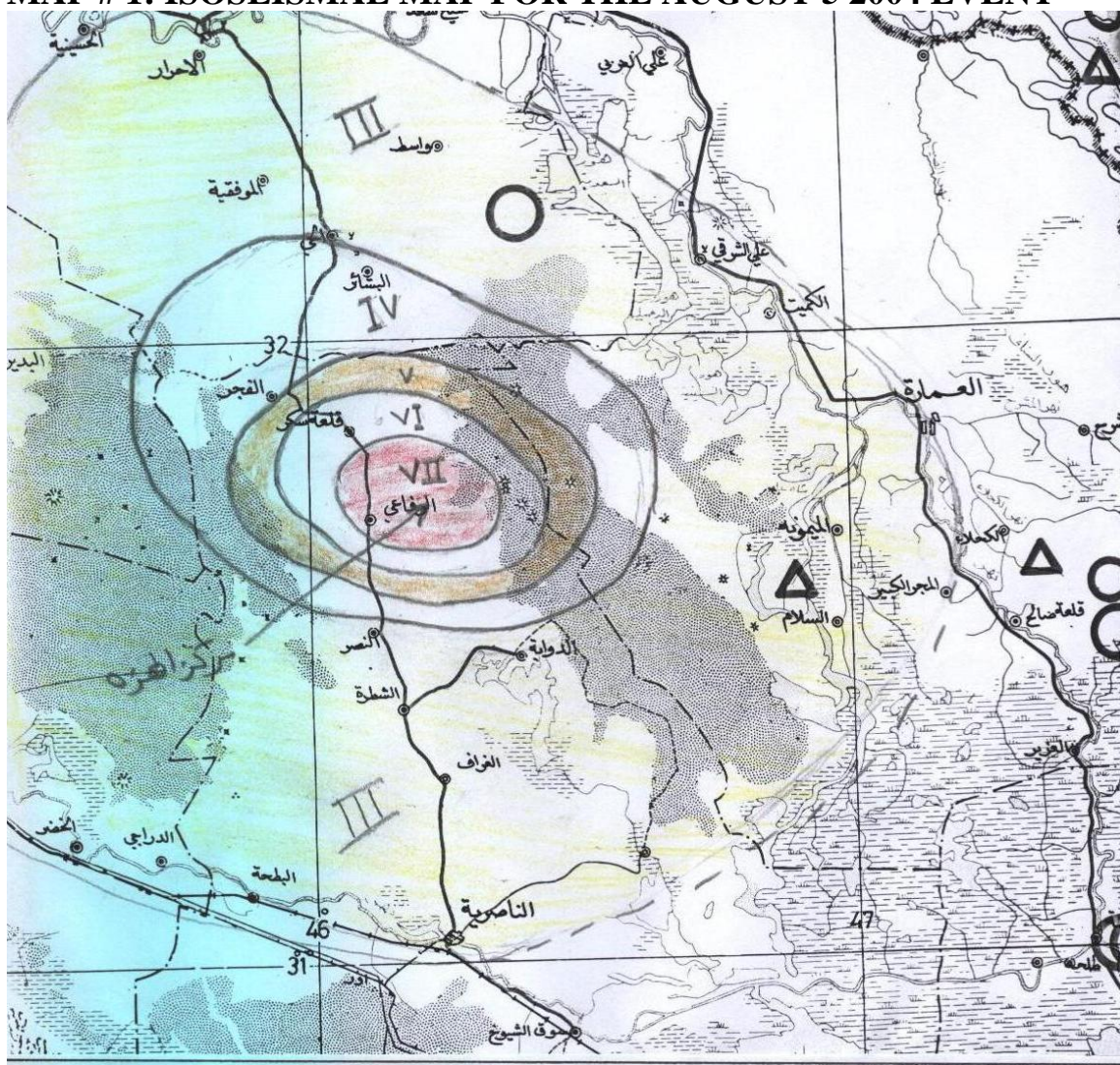
Tow iso-seismal maps have been prepared showing the degree of damaged area. Map#1 is an Iseismal map for the August 5th 2004 event and Iseismal Map #2 is for the August 28 2004 event.

If we consider this region is quiet the occurrence of earthquake in this region raised inevitable question about the probability of experiencing similar earthquake in other regions in the near future.

Please Contact ISN
dawoodmehmood55@yahoo.com
Dr. Dawood S . Mahmood /Director

LIST OF MAPS AND FIGURES

MAP # 1: ISOSEISMAL MAP FOR THE AUGUST 5 2004 EVENT



ISO Seismal map / 5.8.2004

خارطة توزيع الشدة الزلزالية
لهزة الرفاعي ٢٠٠٤/٨/٥

Figure#1:



Fig.1 AL-refaee: total destruction of the main wall and the roof of the house.

Figure # 2



Figure # 3

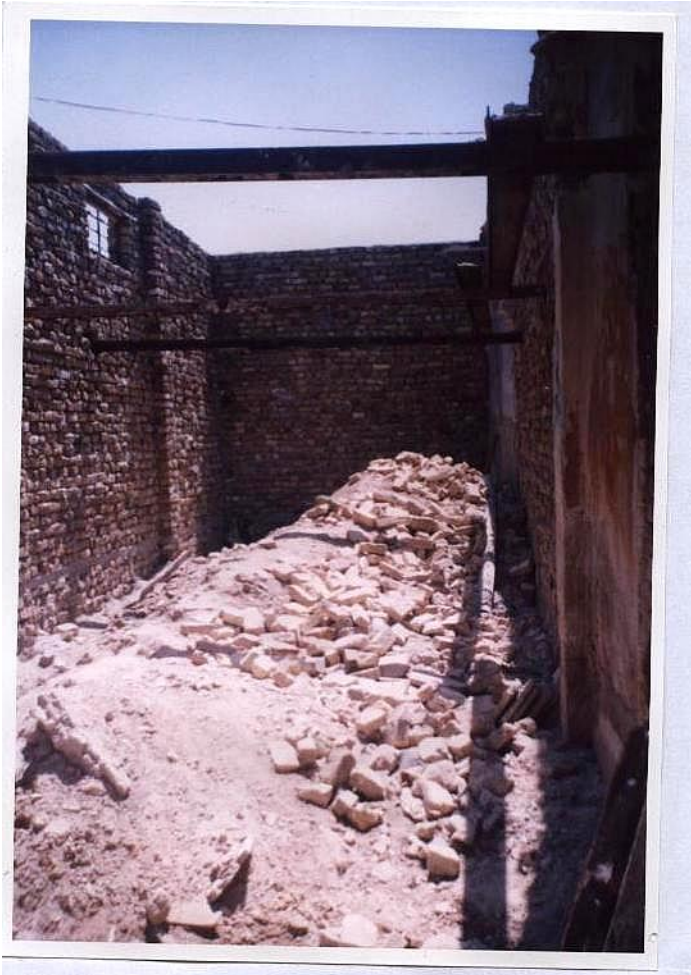


Fig.3 AL-refaae: total collapse of house.

Figure # 4

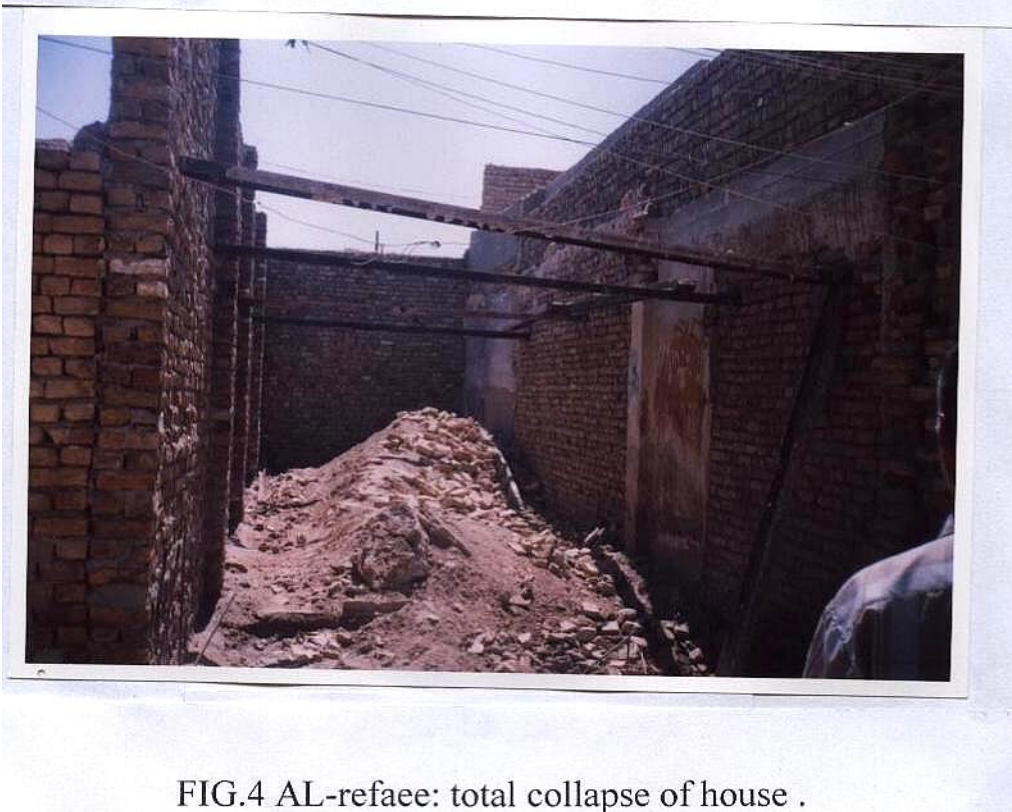


FIG.4 AL-refaae: total collapse of house .

Figure # 5



Fig 5 AL-refaae: diagonal and horizontal Cracks from the basement to the roofs .

Figure # 6

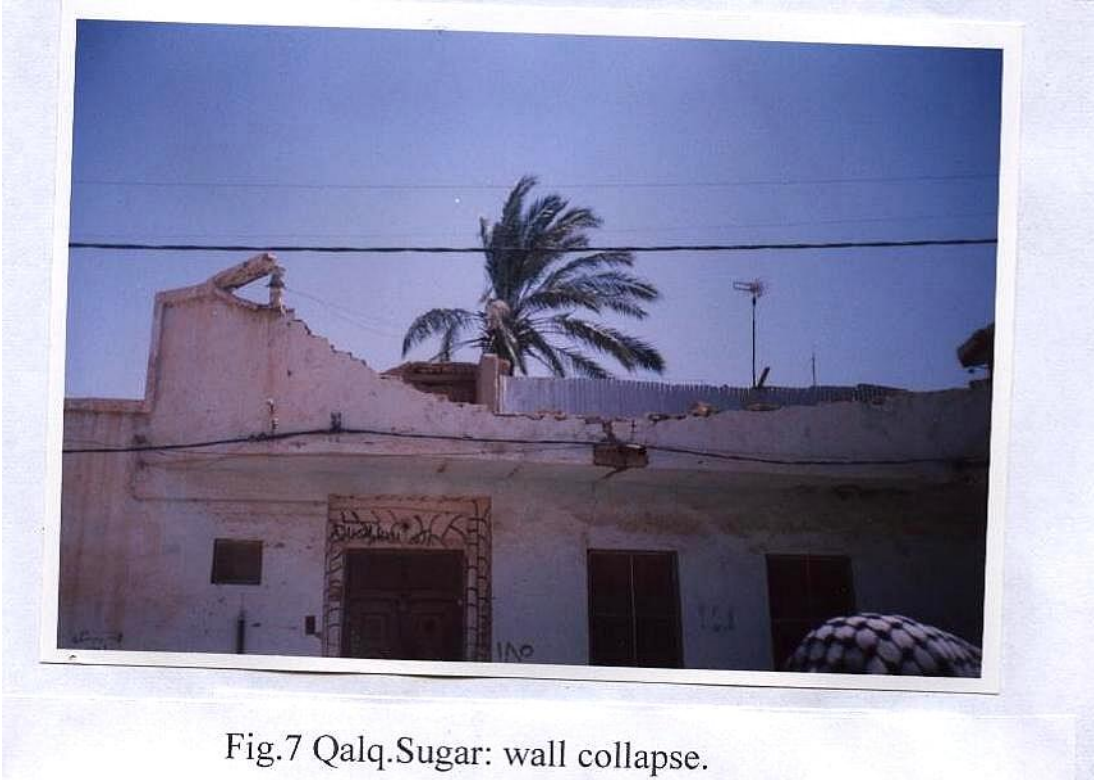
Figure # 7**Fig.7 Qalq.Sugar: wall collapse.**

Figure # 8

